

LED.CO.UK

THE SIRIUS RANGE



ABOUT US

LED.CO.UK is an International supplier of LED lighting technology. We specialise in complete energy efficient lighting solutions for both new and retrofit applications. We provide the highest quality LED based products by integrating premium components to ensure reliability and optimum performance.

Our service delivers a full bespoke package from site surveys, lighting design, the provision of leading edge technology and installation.

THE SIRIUS RANGE

At LED.CO.UK we provide a comprehensive range of lighting options for all your commercial applications each tailored to meet the operating and design parameters required.

Lighting design services are available to ensure designs meet BS EN 12464-1:2011, and Society of Light and Lighting: Code for Lighting 2012. We can also provide a cost of ownership analysis to illustrate savings which can be made versus conventional lighting.

From first point of contact to final sign off we aim to support our customers through the complete process so all details are fully dealt with to maximise performance. Within this brochure we have included our complete Sirius Range of LED Downlights. To view our full range of LED products please visit www.led.co.uk.

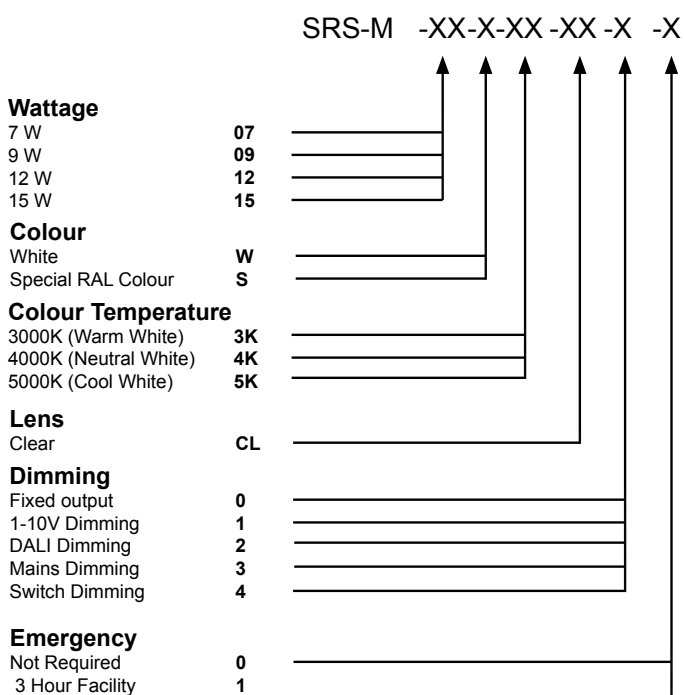
SIRIUS MINI

- CREE LED Engine
- Cast Aluminium
- Instant on - no flicker
- Environmentally Friendly - No mercury or lead enters the environment
- No RF and electronic magnetic interference
- Over 50,000 hours life span



The Sirius Mini LED is a 110mm diameter downlight which uses a CREE LED engine. The heatsink is constructed from die-cast aluminium complete with aluminium bezel and reflector.

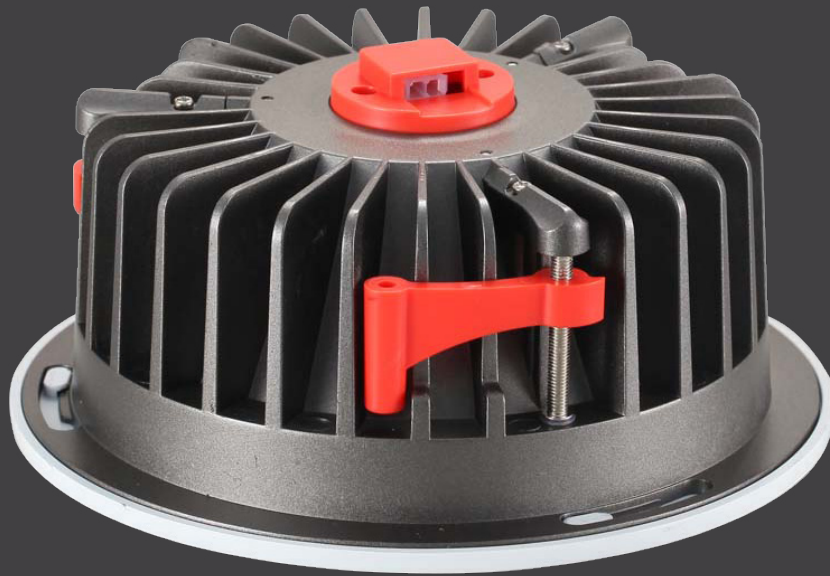
The heatsink features adjustable fold-out arms which allows the Sirius Mini to be installed with ease. The downlight is available in outputs from 630lm to 1350lm.



Example of Code:

SRS-M-15-W-3K-CL-0-0

Wattage:	15W
Colour:	White
Colour Temperature:	3000K
Lens:	Clear
Dimming:	Fixed output
Emergency:	Not Required



Sirius Mini				
Power	7W	9W	12W	15W
Dimensions	Ø110 x 53mm		Cutout: Ø95mm	
Weight	0.9 kg			
Installation	Ceiling Tile/ Plasterboard			
Voltage	220-240Vac		100-240Vac	

Performance				
Power	7W	9W	12W	15W
Exit Lumens (lm)	630	810	1,080	1,350
Efficiency	90.0 lm/cW			
Colour Rendering	Ra>82			
Colour Temperature	3000K / 4000K / 6000K			
Dimming	1-10V / DALI			
IP Rating	IP20			
Operating Temp.	-40°C to 50°C			
Emergency	3 Hour Facility			
Warranty	5 Years			



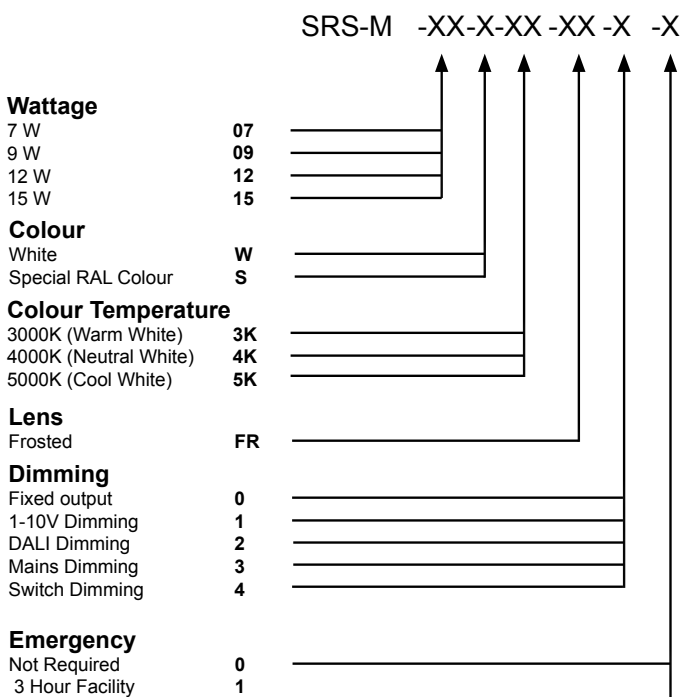
SIRIUS IP MINI

- CREE LED Engine
- Cast Aluminium
- Instant on - no flicker
- Environmentally Friendly - No mercury or lead enters the environment
- IP54 Frosted
- No RF and electronic magnetic interference
- Over 50,000 hours life span



The Sirius IP Mini LED is a 110mm diameter downlight which uses a CREE LED engine. The heatsink is constructed from die-cast aluminium complete with aluminium bezel and reflector.

The heatsink features adjustable fold-out arms which allows the Sirius IP Mini to be installed with ease. The downlight is available in outputs from 630lm to 1350lm. The luminaire is supplied with a frosted diffuser giving the downlight an IP54 rating.



Example of Code:

SRS-M-15-W-3K-FR-0-0

Wattage:	15W
Colour:	White
Colour Temperature:	3000K
Lens:	Frosted
Dimming:	Fixed output
Emergency:	Not Required



Sirius IP Mini				
Power	7W	9W	12W	15W
Dimensions	Ø110 x 53mm		Cutout: Ø95mm	
Weight	0.9 kg			
Installation	Ceiling Tile/ Plasterboard			
Voltage	220-240Vac		100-240Vac	

Performance				
Power	7W	9W	12W	15W
Exit Lumens (lm)	630	810	1,080	1,350
Efficiency	90.0 lm/cW			
Colour Rendering	Ra>82			
Colour Temperature	3000K / 4000K / 6000K			
Dimming	1-10V / DALI			
IP Rating	IP54			
Operating Temp.	-40°C to 50°C			
Emergency	3 Hour Facility			
Warranty	5 Years			



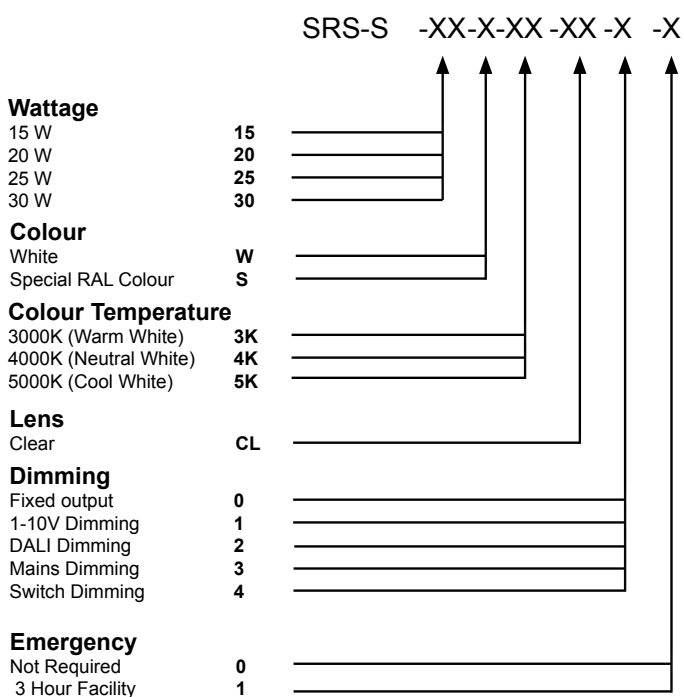
SIRIUS

- CREE LED Engine
- Cast Aluminium
- Instant on - no flicker
- Environmentally Friendly - No mercury or lead enters the environment
- No RF and electronic magnetic interference
- Over 50,000 hours life span



The Sirius LED is a 190mm diameter downlight which uses a CREE LED engine. The heatsink is constructed from die-cast aluminium complete with aluminium bezel and reflector.

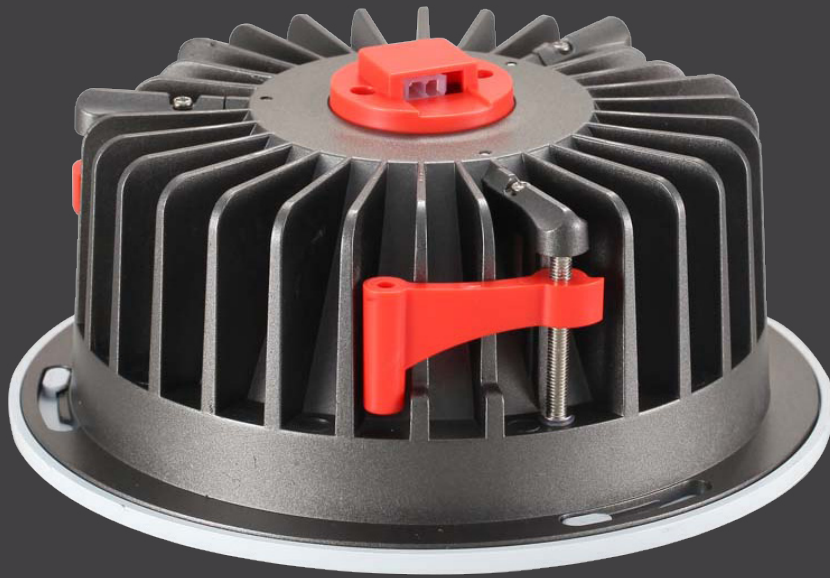
The heatsink features adjustable fold-out arms which allows the Sirius to be installed with ease. The downlight is available in outputs from 1300lm to 2500lm.



Example of Code:

SRS-S-15-W-3K-CL-0-0

Wattage:	15W
Colour:	White
Colour Temperature:	3000K
Lens:	Clear
Dimming:	Fixed output
Emergency:	Not Required



Sirius				
Power	15.9 W	20.6 W	25.4 W	30.8 W
Dimensions	Ø190 x 98mm		Cutout: Ø170mm	
Weight	1.1 kg			
Installation	Ceiling Tile/ Plasterboard			
Voltage	220-240Vac		100-240Vac	

Performance				
Power	15.9 W	20.6 W	25.4 W	30.8 W
Exit Lumens (lm)	1,375	1,765	2,156	2,591
Efficiency	86.5 lm/cW	85.7 lm/cW	84.9 lm/cW	84.1 lm/cW
Colour Rendering	Ra>82			
Colour Temperature	3000K / 4000K / 6000K			
Dimming	1-10V / DALI			
IP Rating	IP20			
Operating Temp.	-40°C to 50°C			
Emergency	3 Hour Facility			
Warranty	5 Years			



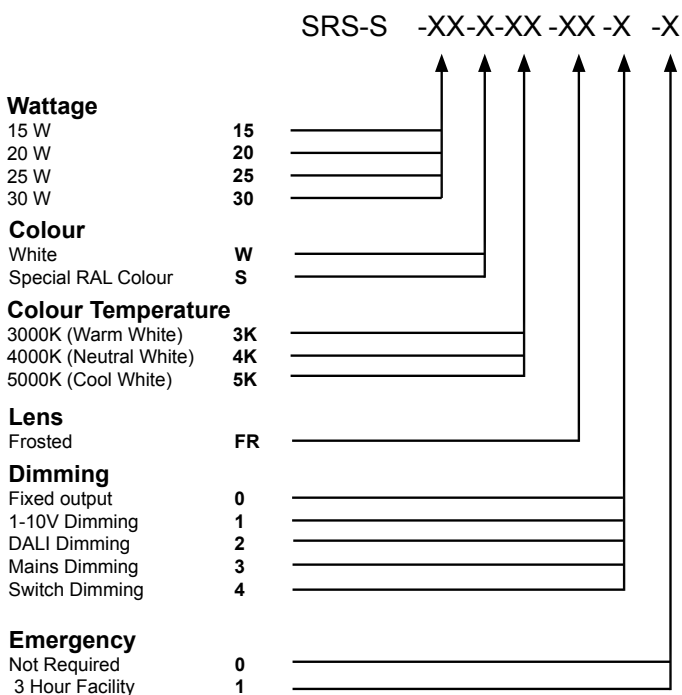
SIRIUS IP

- CREE LED Engine
- IP54 rated
- Cast Aluminium
- Instant on - no flicker
- Environmentally Friendly - No mercury or lead enters the environment
- No RF and electronic magnetic interference
- Over 50,000 hours life span



The Sirius IP LED is a 190mm diameter downlight which uses a CREE LED engine. The heatsink is constructed from die-cast aluminium complete with aluminium bezel and reflector.

The heatsink features adjustable fold-out arms which allows the Sirius IP to be installed with ease. The downlight is available in outputs from 1300lm to 2500lm. The luminaire is supplied with a frosted diffuser giving the downlight a IP54 rating.



Example of Code:

SRS-S-15-W-3K-FR-0-0

Wattage:	15W
Colour:	White
Colour Temperature:	3000K
Lens:	Frosted
Dimming:	Fixed output
Emergency:	Not Required



Sirius IP				
Power	15.9 W	20.6 W	25.4 W	30.8 W
Dimensions	Ø190 x 98mm		Cutout: Ø170mm	
Weight	1.1 kg			
Installation	Ceiling Tile/ Plasterboard			
Voltage	220-240Vac		100-240Vac	

Performance				
Power	15.9 W	20.6 W	25.4 W	30.8 W
Exit Lumens (lm)	1,288	1,677	2,069	2,504
Efficiency	81.0 lm/cW	81.4 lm/cW	81.5 lm/cW	81.3 lm/cW
Colour Rendering	Ra>82			
Colour Temperature	3000K / 4000K / 6000K			
Dimming	1-10V / DALI			
IP Rating	IP54			
Operating Temp.	-40°C to 50°C			
Emergency	3 Hour Facility			
Warranty	5 Years			



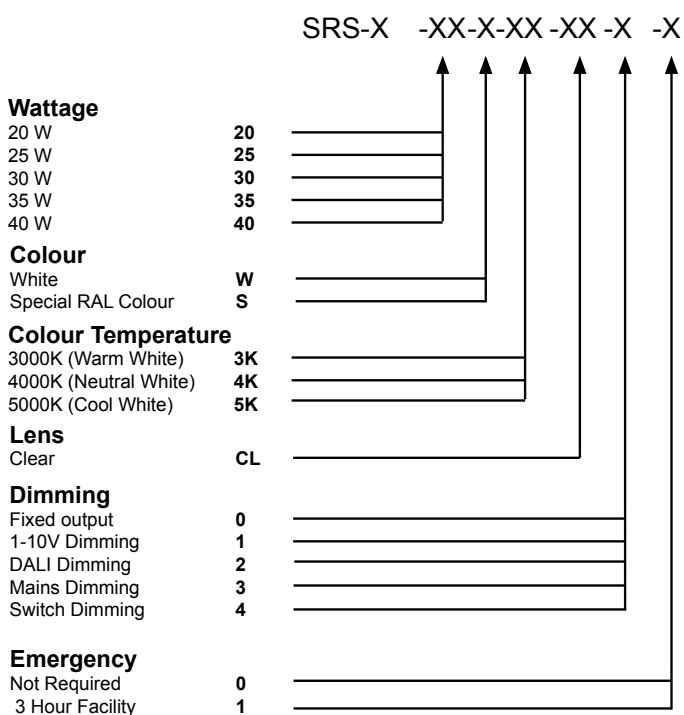
SIRIUS MAX

- CREE LED Engine
- Cast Aluminium
- Instant on - no flicker
- Environmentally Friendly - No mercury or lead enters the environment
- No RF and electronic magnetic interference
- Over 50,000 hours life span



The Sirius Max LED is a 230mm diameter downlight which uses a CREE LED engine. The heatsink is constructed from die-cast aluminium complete with aluminium bezel and reflector.

The heatsink features adjustable fold-out arms which allows the Sirius Max to be installed with ease. The downlight is available in outputs from 1500lm to 3300lm. The luminaire is supplied with an open bezel.



Example of Code:

SRS-X-25-W-3K-CL-0-0

Wattage:	25W
Colour:	White
Colour Temperature:	3000K
Lens:	Clear
Dimming:	Fixed output
Emergency:	Not Required



Sirius Max					
Power	20W	25W	30W	35W	40W
Dimensions	Ø230 x 99mm			Ø200-210mm	
Installation	Ceiling Tile/ Plasterboard				
Voltage	220-240Vac				

Performance					
Power	20W	25W	30W	35W	40W
Exit Lumens (lm)	1,514	2,172	2,502	2,863	3,300
Efficiency	75.7 ll/cW	86.9 ll/cW	83.4 ll/cW	81.8 ll/cW	82.5 ll/cW
Colour Rendering	Ra>82				
Colour Temperature	3000K / 4000K / 6000K				
Dimming	1-10V / DALI				
IP Rating	IP20				
Operating Temp.	-40°C to 50°C				
Emergency	3 Hour Facility				
Warranty	5 Years				



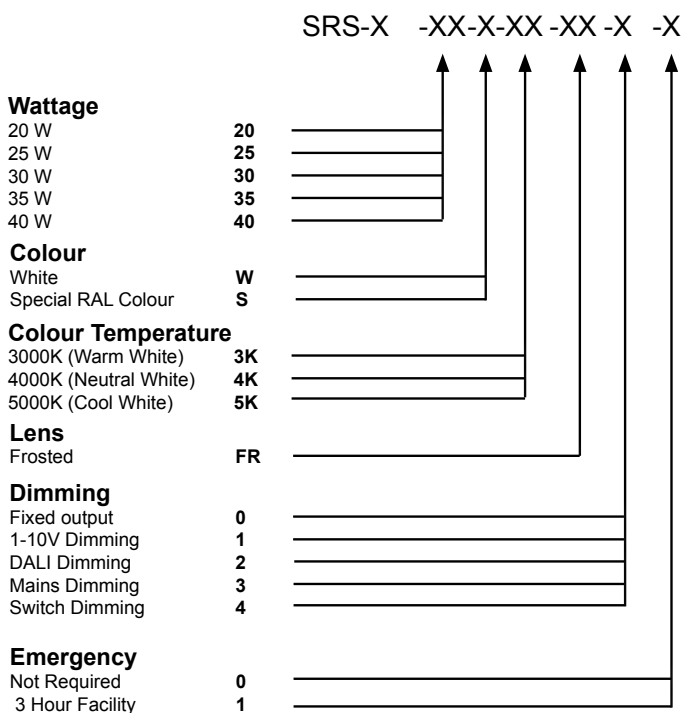
SIRIUS IP MAX

- CREE LED Engine
- Cast Aluminium
- Instant on - no flicker
- Environmentally Friendly - No mercury or lead enters the environment
- No RF and electronic magnetic interference
- IP54 frosted lens
- Over 50,000 hours life span



The Sirius IP Max LED is a 230mm diameter downlight which uses a CREE LED engine. The heatsink is constructed from die-cast aluminium complete with aluminium bezel and reflector.

The heatsink features adjustable fold-out arms which allows the Sirius IP Max to be installed with ease. The downlight is available in outputs from 1500lm to 3300lm. The luminaire is supplied with an IP54 frosted diffuser.



Example of Code:

SRS-X-25-W-3K-CL-0-0

Wattage:	25W
Colour:	White
Colour Temperature:	3000K
Lens:	Frosted
Dimming:	Fixed output
Emergency:	Not Required



Sirius IP Max					
Power	20W	25W	30W	35W	40W
Dimensions	Ø230 x 99mm			Ø200-210mm	
Installation	Ceiling Tile/ Plasterboard				
Voltage	220-240Vac				

Performance					
Power	20W	25W	30W	35W	40W
Exit Lumens (lm)	1,514	2,172	2,502	2,863	3,300
Efficiency	75.7 ll/cW	86.9 ll/cW	83.4 ll/cW	81.8 ll/cW	82.5 ll/cW
Colour Rendering	Ra>82				
Colour Temperature	3000K / 4000K / 6000K				
Dimming	1-10V / DALI				
IP Rating	IP54				
Operating Temp.	-40°C to 50°C				
Emergency	3 Hour Facility				
Warranty	5 Years				



sales@led.co.uk
www.led.co.uk

LED.CO.UK